

the cotswold gardening school

# Garden Design Courses

# Prospectus





## We are extremely proud of our past students' success

Many of our graduates have set up successful businesses, as well as winning some prestigious awards.

Steve Williams graduated as top student in 2017 and went on to be short-listed for two coveted Society of Garden Designers' awards in both the commercial and residential categories. Steve rejoins us at the school to share his expertise in 3D computer modelling and to inspire current students with his impressive portfolio.

Martyn Wilson graduated in 2015 and has gone on to win a string of RHS medals including gold at both Hampton Court RHS show and at the RHS Malvern Spring Festival.

Kate Durr won an RHS gold medal and the Best Festival Garden award at the RHS Malvern Spring Festival in 2015. She has gone on to be creative director at Highgrove House, the country estate of HRH The Prince of Wales. She has plans for building a show garden at RHS Chelsea and we wish her every success.

Jessica Makins, Gary Bristow and Julie Bellingham all graduated in 2018 and each went on to win various RHS medals at the RHS Malvern Spring Festival. 2019 graduate Nick Leitch won silver gilt at the RHS Tatton Park Flower Show.

Briony Doubleday created show gardens at Blenheim Palace, RHS Tatton and in 2019 The UK Expo Garden for the Department of International Trade in Beijing, China.



# One Year Professional Garden Design Diploma

(part-time course)

Professional garden design training by industry experts in small friendly groups

Feedback on all practical work is offered in class on a regular basis. A private tutorial is also available each term to discuss your personal progress and career path.





## Our Setting

Set in the grounds of historic Gossington Hall in the beautiful Gloucestershire countryside we are an independent design school offering quality learning in a supportive and friendly atmosphere. We are supported by Bridgwater & Taunton College for our One Year Diploma in Professional Garden Design and our carefully selected tutors are industry experts.

The lead tutor is Caroline Tatham, our school Principal who is an experienced, qualified lecturer and award-winning, practising garden designer. Caroline has built strong links between the school and the garden design industry.

Creativity is at the heart of everything we do and we welcome those with no previous experience. Support and guidance is offered throughout your professional course and we even guide you through the challenges of setting up, marketing and running your own business.





## Four Live Projects

The One Year Professional Diploma course includes four live projects, designing a range of sites for real clients with expert guidance and regular feedback.

This is to ensure that you will graduate with invaluable experience and real work in your portfolio.

There are also lots of ongoing garden and planting design examples on hand from Caroline's busy design practice. She will regularly share progress on her own client work with you so that you can get a sense of how the industry works.

By the end of the course you will be able to produce competent garden plans, three dimensional visuals, mood boards, surveys and planting plans. You will also understand the vital importance of sketchbook work in the creative process and that this can be achieved by gathering found images as well as drawing.

# Meet some of our tutors

Industry experts out there practising what they teach



Steve Williams  
CAD



Paul Willavoys  
Visting tutor



Pip Haines  
Visiting tutor



Andy Ball  
Hard landscape



Nicholas Leitch  
Visiting tutor



Sarah Fletcher  
Visiting tutor

## Caroline Tatham

is the founder and Principal of The Cotswold Gardening School. She is a qualified lecturer with many years experience teaching professional garden and planting design as well as practical horticulture.

She graduated as top student from the highly regarded English Gardening School where she has also taught and externally assessed student work.

Caroline is a well-recognised and award-winning garden and planting designer as Cotswold Garden Design. She has mentored aspiring garden designers in the Festival Show Garden category at the RHS Malvern Spring Festival.

Her aptitude for garden design has also shot her to stardom on the television where she built a show garden for the Eden Project in Cornwall, which featured on the TV series 'A Garden for Eden'.

Caroline is lead tutor mainly on the one year diploma courses. All courses at the school have been written by Caroline and are taught using her methods with real life examples from her busy garden design practice.



Eleanor McArdle  
Visiting tutor



Rebecca Ketley  
Visiting tutor



Richard West  
Visiting tutor



Gary Bristow  
Visiting tutor



Sarah Lockwood  
Visiting tutor



Sarah Lowe  
Visiting tutor

We invite a broad range of experienced lecturers into the school to offer you the benefit of their years of experience. Some visiting tutors will be with you throughout the course whilst others will come to offer specialist tutoring on specific topics.

Andy Ball is an RHS judge who runs Big Fish Landscapes and has won many RHS medals from Malvern to Chelsea. Andy will be joining you on site as well as in the classroom. Rupert Keys runs Keyscape Design and won an RHS gold medal and 'Best in Show' at the RHS Malvern Spring Festival. He also undertakes a broad range of domestic client work.

Nick Woodhouse and John Law are founding directors of Bath-based interior and garden design company Woodhouse and Law. They bring their experience of establishing and running a busy and extremely successful garden and interior design practice to the course.

Steve Williams graduated from The Cotswold Gardening School in 2017 and has since set up his own successful practice. He uses a wide array of approaches in bringing his designs to life, from hand drawn illustration to fully rendered digital images, and he will share an insight into how to use these techniques to your advantage.

Our teaching methods and student work are externally assessed by Bridgwater and Taunton College who help us to ensure our academic quality.

# Building industry links



## We encourage students to get out there and get as much real experience as possible

Caroline is keen to offer her students volunteering opportunities wherever possible.

In the past students have been able to come on site with Caroline and experience planting up some of her clients' projects.

Students have also been involved in building RHS feature gardens and celebrity stages for RHS shows, as well as building stages for festivals at HRH The Prince of Wales's Highgrove House.

Past students who go on to build show gardens often request volunteers from our current cohort.





## Getting your career off to a flying start

We pride ourselves on our industry links. Caroline has built the school up on the foundation of her experience running Cotswold Garden Design and she works hard to incorporate as many industry contacts as possible into the course.

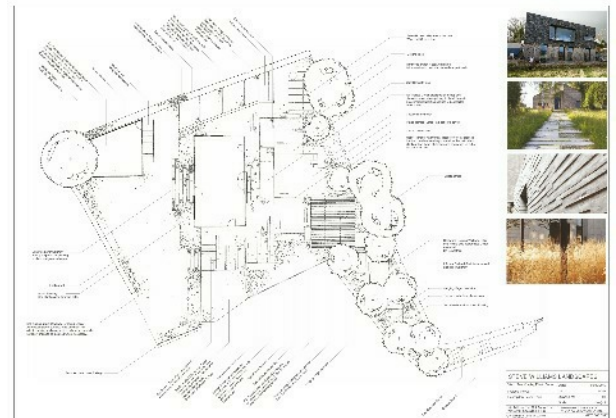
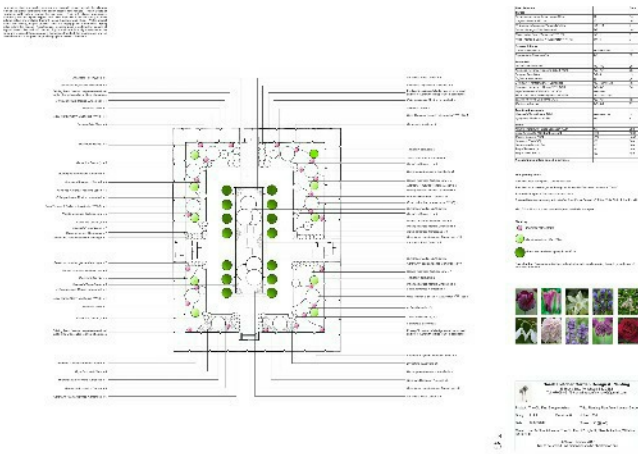
This means that you will have useful introductions to trade suppliers such as nurseries, specimen mature tree specialists, lighting and irrigation suppliers and many other experts in fields relevant to your future career.

Many of the project gardens offered to the course come as a result of Caroline's garden design business and in the past we have been able to offer sites such as the Corinium Museum in Cirencester, Slimbridge Wetlands Centre, The Heritage Hub in Gloucester and The Gloucestershire Police Constabulary as well as a broad range of private client gardens from small courtyards through to large, quintessential Cotswold estates.

You will start with a small level plot and build up to more complex and challenging sites through the course and all with Caroline's expert guidance.



# A professional approach



## Successful applicants

We interview applicants for this course so that we can help ensure that we are the right college for you. Our One Year Professional Garden Design Diploma Course is suitable for those serious about a career in garden design. We also offer various online courses for those more interested in simply learning the process of garden and planting design or designing their own garden.

Our One Year Professional Diploma is a very intensive course covering all aspects of garden design. It requires at least one day per week of homework in addition to your time spent at the school to ensure that you get the most out of your time with us - ideally more.

If you are serious about garden design, we would love you to come and learn how to think and present like a designer. Together we will explore drawing, both by hand using the correct equipment and using the right software on a computer.

There are plenty of inspirational slide shows and informative handouts. Throughout the course you will track your own progress with an individual learning plan and you will receive regular feedback via group & private tutorials as well as written feedback on your work.

After you graduate we love to keep in touch and support you with your new career.



## One Year Professional Garden Design

### At a glance

#### START DATES

each year in September

#### ENTRY REQUIREMENTS

basic computer skills  
be career motivated

#### COMPULSORY LEARNING HOURS

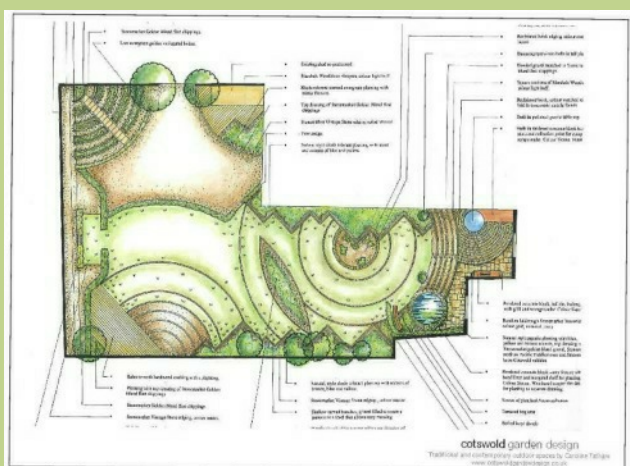
150 hrs at the school  
250 hrs at home  
(~ a total of 14 hrs per week)

#### OPTIONAL EXTRAS AVAILABLE

3 day gateway course  
guided CPD day courses

#### STUDY DURATION 30 weeks

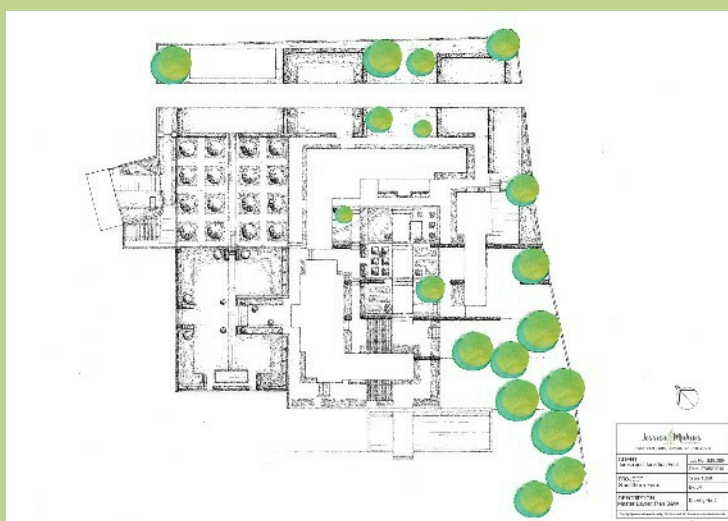
# Three Day Gateway to Garden Design



## Minchinhampton : South Facing Round Border



First concept ideas and images 18th August 2007



This three day course gives an insight into the process of garden design and provides some practical experience of working in a creative design studio.

There will be lots of opportunities to discuss any questions or concerns you may have about drawing, using a computer, your plant knowledge and any other worries you may have if you are dreaming of a career change to garden design.

Suitable for anyone considering attending our One Year Professional Garden Design Diploma course. If you apply and are accepted on the One Year course, we will deduct the cost of this three day course from the fees. Can also be studied as a stand-alone course.

The course is delivered on three consecutive weekdays .



# Twelve Week Design Your Own Garden Online course

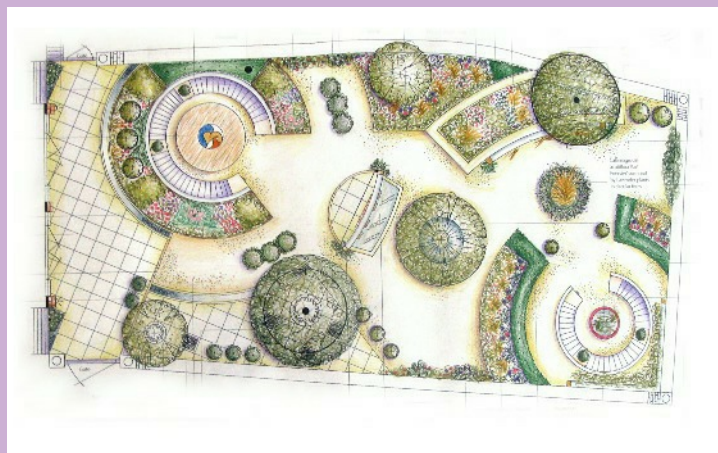
This online course is suitable for anyone wanting to know more about how professionals design the whole garden rather than just its planting (although we do include planting too) and work on ideas for their own individual outdoor space.

Learn how to make the most of your garden space and draw up professional standard master layout plans. Learn how to gather your thoughts using mood boards and ensure that all your wishes for your garden come together in the creation of a cohesive space that relates to your house.



We love students to ask questions and now, for the first time, we can help you to design your own garden with feedback from our school Principal, Caroline.

Let us help you to create the perfect design for you and your garden style with Caroline's professional guidance underpinned by her over twenty years of garden design and teaching experience. Caroline will discuss your project with you in advance to ensure that it is suitable for the course.

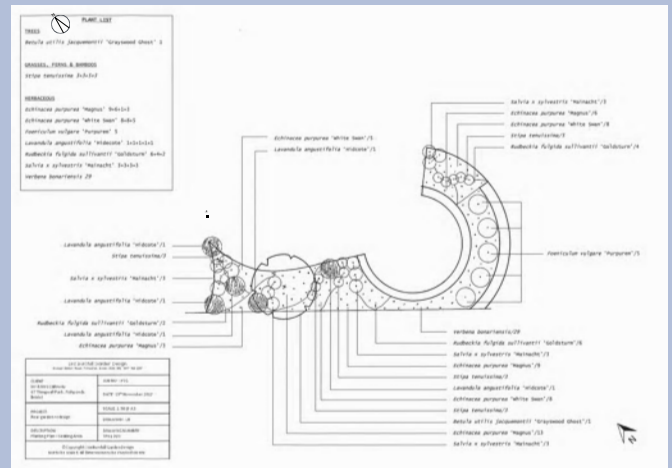


The course has a high level of student participation and includes step by step downloadable PDF handbooks, informative slide shows, videos and a virtual classroom for interactive feedback. This is also a great place to meet up with fellow students who may be further along in the course with examples of past design outcomes there as well.

# Shorter Online Courses

## Planning and Planting Borders Online - Introduction to Garden Design Online

These courses deliver the same content as our tried and tested popular day courses and include pre-recorded presentations delivered by Caroline Tatham. There are also digital course handbooks that summarise everything you need to design your own planting or rethink your whole outdoor space. Access a virtual classroom for feedback, questions and to meet fellow students.



## Creative Planting Design Online

A three week guided online course.

This is a more guided and intensive course that also includes access to a virtual classroom for interactive feedback with our Principal, Caroline Tatham. The course will guide you and inspire new ways of thinking about your planting ideas and process. This course includes a daily mini project from Monday to Friday each week, and a main weekly project each Saturday. There are three main projects to complete.

## For further information

Please contact Helena or Topsy via email at:  
[info@cotswoldgardeningschool.co.uk](mailto:info@cotswoldgardeningschool.co.uk)  
 or call us on 01453 899018

You would be most welcome at one of our open mornings, please see the timetable on our website for further details

[www.cotswoldgardeningschool.co.uk](http://www.cotswoldgardeningschool.co.uk)



Helena Radford



Topsy Borthwick

